



Oleander Crescent

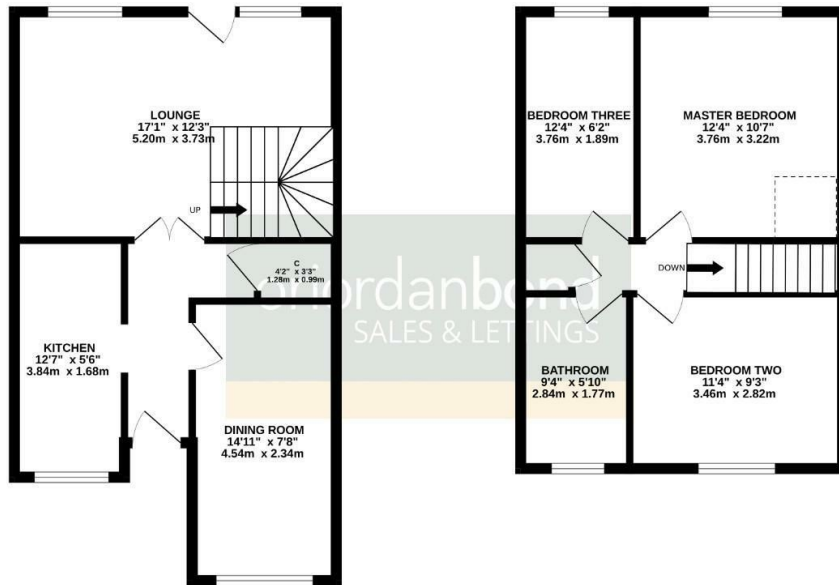
Cherry Lodge, Northampton

oriordanbond
SALES & LETTINGS



GROUND FLOOR
461 sq.ft. (42.9 sq.m.) approx.

1ST FLOOR
418 sq.ft. (38.9 sq.m.) approx.



TOTAL FLOOR AREA: 879 sq.ft. (81.7 sq.m.) approx.

Whilst every attempt has been made to ensure the accuracy of the floorplan contained here, measurements of doors, windows, rooms and any other items are approximate and no responsibility is taken for any error, omission or mis-measurement. This plan is for illustrative purposes only and should be used as such by any prospective purchaser. The services, systems and appliances shown have not been tested and no guarantee as to their operability or efficiency can be given.
Made with Metropix 02025

Oleander Crescent

Cherry Lodge

NN3 8QP

PRICE £260,000

A well presented three bedroom end terraced property situated in this popular location of Cherry Lodge. The property gives good access to local schools and amenities as well as Weston Favell Shopping Centre.

The accommodation comprises entrance hall, sitting room, dining room and a newly re-fitted kitchen. The first floor offers three fantastic size bedrooms and a re-fitted modern bathroom. Outside is an enclosed fully landscaped rear garden with artificial lawn and patio and a gravelled driveway to the front providing off road parking for two cars. Further benefits include uPVC double glazing and gas radiator heating serviced via a combi boiler. (A/879/S)

Additional information

- Council Tax Band: B
- Energy Efficiency Rating: D

Viewing

Viewing strictly by appointment – details below

Disclaimer

O'Riordan Bond Estate Agents Limited has not tested apparatus, equipment, fittings or services and so cannot verify they are in working order. The buyer is advised to obtain verification from their solicitor or surveyor.

O'Riordan Bond Weston Favell Sales
01604 784007

westonfavell@oriordanbond.co.uk

